



# PRODUCT BULLETIN

SPProd-015  
 Revision 1  
 July 10, 2018

- Products:** SP-700  
**Serial Range:** Beginning with P70A0275  
**Release Date:** July 1, 2018  
**Revision 1:** Beginning serial number added.  
 Proximity sensor mounting plate change added.

## Rear Flue and Smoke Extractor Locations

The rear flue and smoke extractor locations are changing in standard configuration SP-700s. Currently the rear flue is located towards the center and the smoke extractor is located on the outside edge of a standard configuration SP-700. On mirror image SP-700s the rear flue is located on the outside edge and the smoke extractor is located towards the center.

For orders placed after July 1, 2018 the rear flue will be located on the outside edge and the smoke extractor will be located towards the center. Mirror image configurations of the SP-700 will remain the same. With this change a mirror image SP-700 will be a true mirror image of the standard configuration SP-700.

See the following page for an illustration and dimensions.

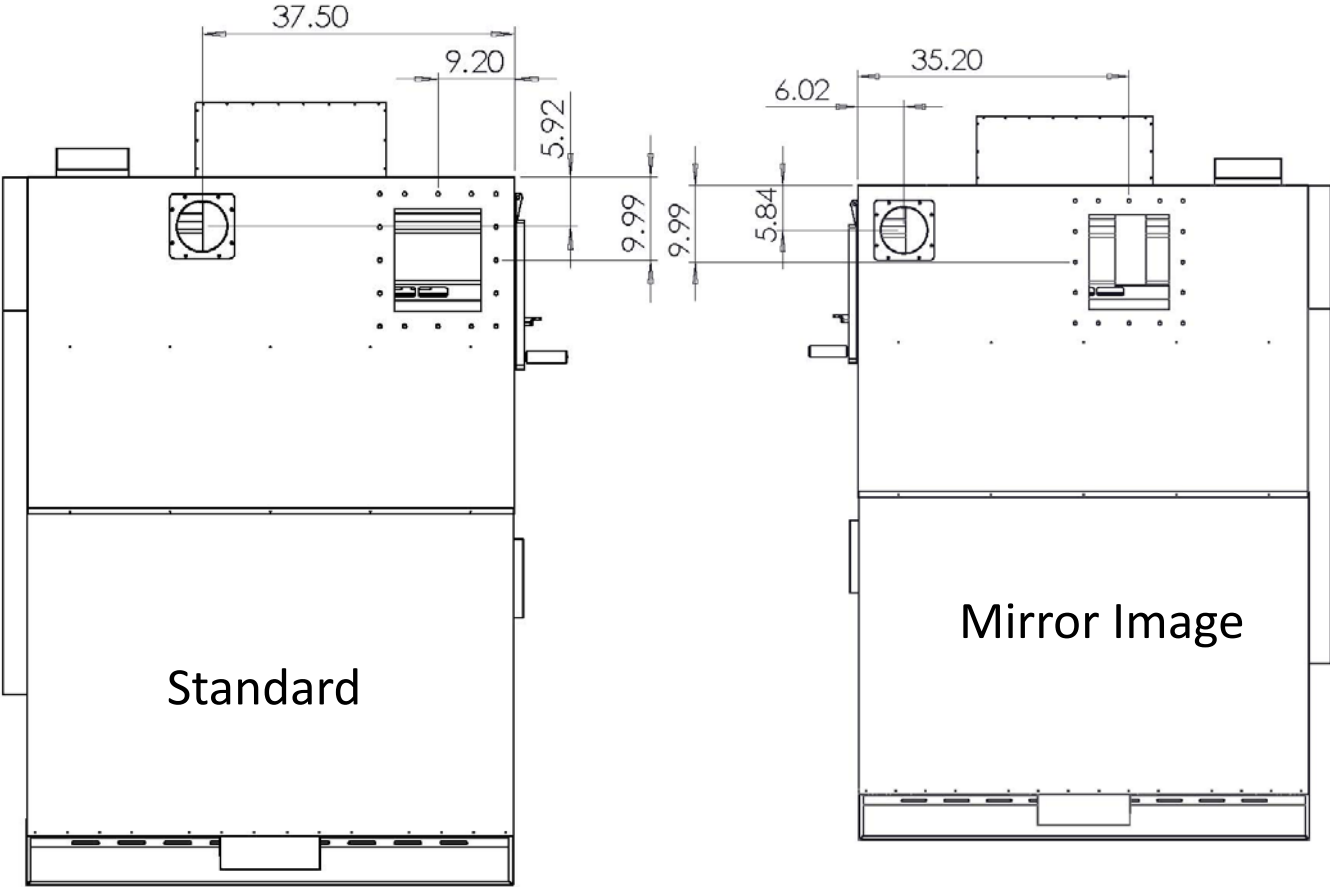
## 18" Deep Rack System

An optional 18" deep rack system is available for the SP-700 as of the above release date.

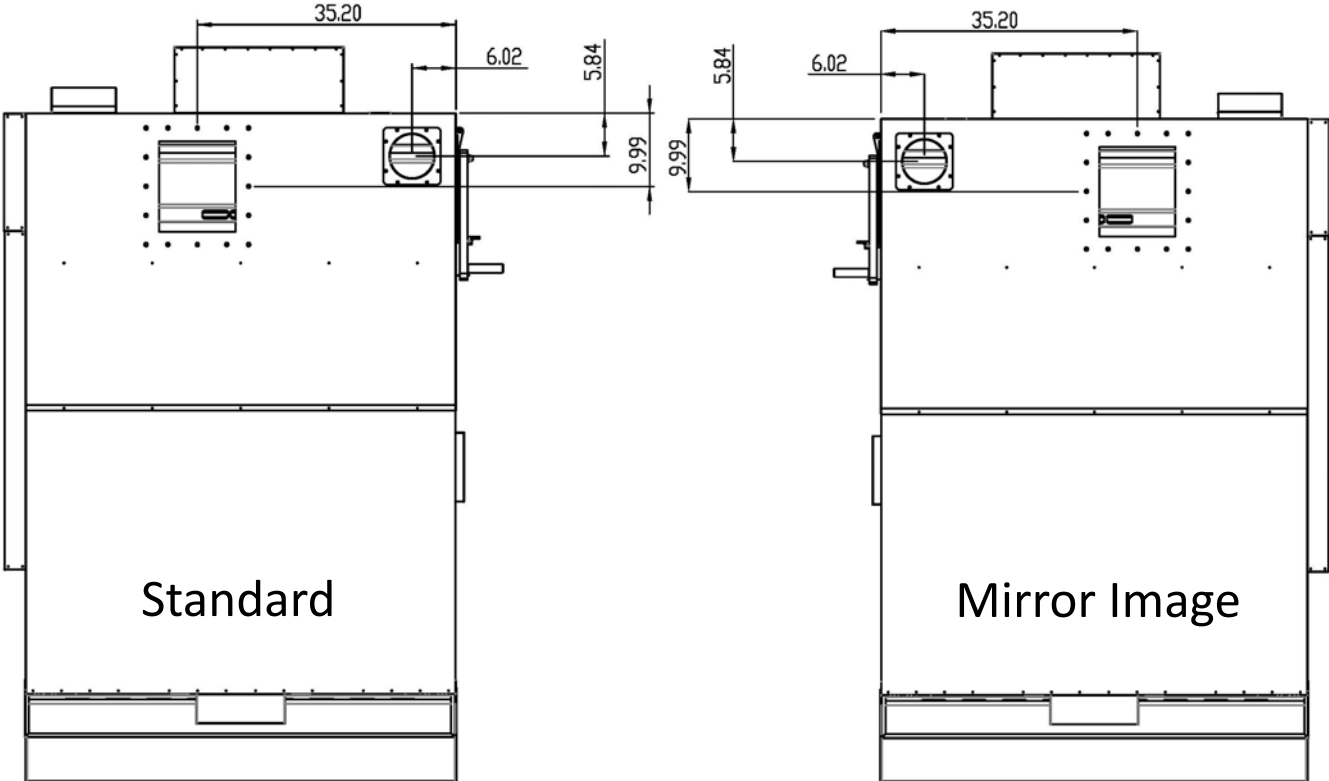
	Standard	Optional
Rack Hangers	(6) 3-tier hangers, 3-1/2" (89mm) spacing	(4) 3-tier hangers, 4-1/2" (114mm) spacing
Hanger Stock Code	994018	994031
Product Racks	(18) 12" x 48" racks (305 x 1219mm)	(12) 18" x 48" racks (457 x 1219mm)
Rack Stock Codes	970014 (Chrome) 971008 (Stainless Steel)	970013 (Chrome) 971007 (Stainless Steel)
Cooking Surface	72 ft <sup>2</sup> (6.69 m <sup>2</sup> )	72 ft <sup>2</sup> (6.69 m <sup>2</sup> )

Refer to the SP-700 Specification Sheet revised May 2018 for smoker capacities and to Volume 2 of the 2018 Equipment Price Lists for optional rack system pricing.

**Orders Placed Before July 1, 2018**

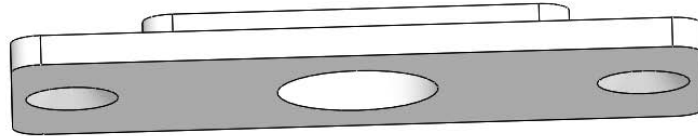


**Orders Placed After July 1, 2018**



### **Proximity Sensor Mounting Plate**

The Teflon® mounting plate for the proximity sensor changes from the large mounting plate (425318) to the small mounting plate (425317). All other aspects of the proximity sensor remain the same.



### **Additional Comments:**

The rotisserie axle location changes on SP-700s with a 18" deep rack system. If a SP-700 currently has a 12" deep rack system the rotisserie wheels and product rack hangers cannot be changed for a 18" deep rack system.

The overall dimensions of the SP-700 do not change as a result of the changes to the flue and smoke extractor locations, or the addition of the 18" deep rack system.

The SPK-1000 will continue to be available until January 1, 2019.

### **Secondary Distribution:**

Sales associates within the Distributor's organization.

Service technicians within the Distributor's organization.

Food equipment dealers.

### **For Additional Information:**

Southern Pride Sales Support: (800) 851-8180